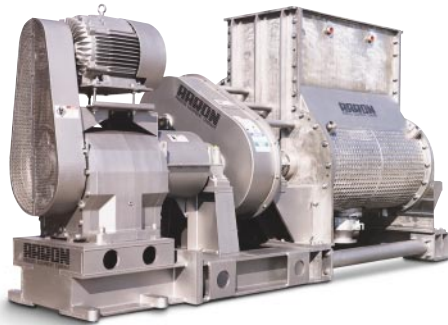


Batch Mixer Split Level Design



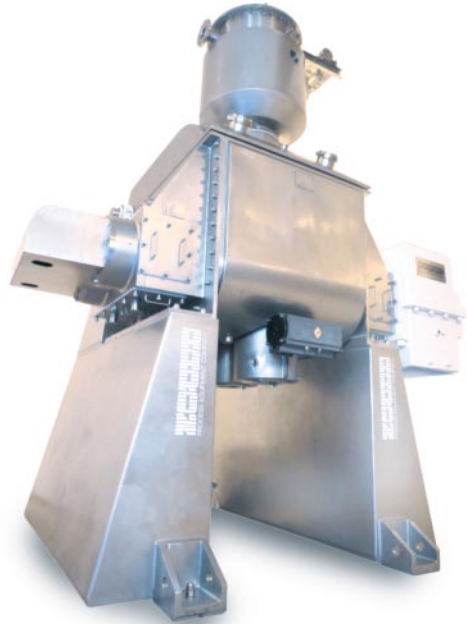
ZBG

Aaron's Split Level 750 Gallon design has approximately 50% more effective mixing and heat transfer area as compared to conventional designs. A thorough mixing action is assured by the shape of the bowl and the close tolerance between the mixing blades and the bowl. Because one blade arm is positioned offset and above the other, only one discharge outlet is required.

Model ZBG-750 Bottom Discharge

Total Capacity	1100 Gallons / 4175 Liters
Mixing Capacity	750 Gallons / 2840 Liters
Drive	Available in belt drive and direct coupled drives up to 300 horsepower. Other options available are hydraulic powered.
Blade Speed	35 RPM (Front) / 38 RPM (Rear)
Discharge	12" Flanged Outlet
Seals	Standard Packing Glands
Blades	Sigma Design
Construction	T304 S/S Material Standard. Other material of construction available.

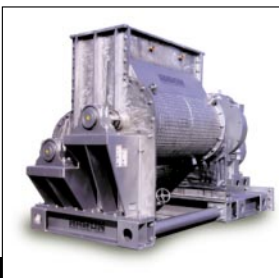
Batch Mixer Food Grade S/S Design



Aaron Double Arm Mixers can be designed for sanitary applications with all stainless construction, high polish, USDA approved components, wash down controls and can be engineered and tailored to a specific set of requirements.

**Ask about optional features
to meet your requirements.**

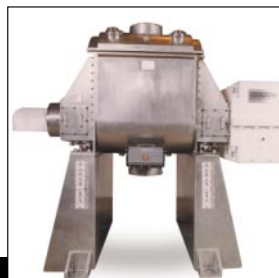
750 Gallon Split Level Design



Sigma Blades Mounted
One Above—One Below



Jacketed Bowl,
Heated Discharge Valves



Cored Blades and Vacuum
Encapsulated Seal Covers

